

# Kings Park corporate logo

*Kings Park and Botanic Garden is poised to enter a new and challenging phase in its history. As part of this process a comprehensive review was undertaken and a new corporate identity developed to set the future direction of the Park.*



The identity needed to capture the uniqueness of the Park and its natural attractions, as well as be representative of the quality of life associated with Western Australia. The new corporate identity was developed to enhance the resources of Kings Park to provide maximum public benefit and to develop the important relationship between people and flora and fauna. It also recognises that the key to the Park's future development is to become more self-sufficient and capitalise on the many resources the Park has to offer.

Like the corporate identity, the corporate logo had to mirror the unrivalled natural beauty of the Park and its contribution to the lifestyle of the State. The diversity of flora found in the Park provided an ideal impetus to the design. Also, the natural earthy

colours of the flora — not found elsewhere in the world — lent scope to the development of a truly Western Australian image.

The State's floral emblem, the red and green kangaroo paw, was selected as an integral part of the design. The indigenous banksia and eucalyptus were then interwoven to form a strong and clear design statement of the promotion of Western Australia's natural environment. Three colours are to be used on a cream background: vibrant red and green for the kangaroo paw, standing out against the subdued eucalypt green, symbolising the muted colour of the natural bushland. Red is repeated in the *Banksia menziesii* which is common in the Park bushland.

The logo was designed by Roland Butcher of *Sightworks*, sub-contracting

to *303 Advertising* who are currently consulting to the Board. The logo will be used for all Park signs, stationery, uniforms and vehicles. Already, it is in use on vehicles, stationery and staff uniforms, but it will take up to two years for all signs throughout the Park to be completed. The Friends will use the logo on our membership card and stationery.

## The Park In The News

Part of the Park's future direction is to work with the Media to promote its role in contributing to science and education to the public. A Media Liaison company has been contracted to do this, and already you will have observed that there has been some *(continued on page four)*

### IN THIS ISSUE >

#### Bunya Bunya Pine

*This magnificent pine only occurs naturally in the southern hemisphere. With its huge fruit, it had economic significance for the Aborigines.*

#### Friends News

*The Friends have been busy with meetings and other activities. Read about these on Page 3.*

#### Kings Park Guides Report

*The new information Bureau is being fitted out to work efficiently. The new Guides, who include some Friends, will help out here.*

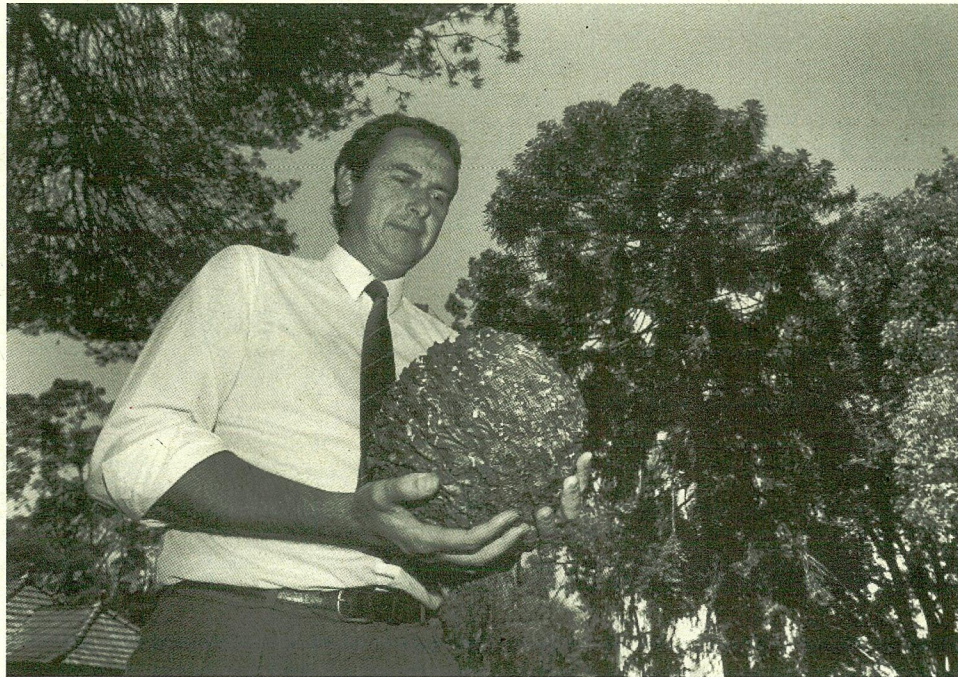
# What's flowering

## Bunya Bunya Pine - a significant tree

**Y**OU have probably noticed the tree, near the Administration building, which has been fenced off with orange tape. This is the Bunya Bunya Pine from the rainforest regions of Queensland. It develops a large fruit which could severely injure someone if it hit them - hence the reason for the fence.

There are 18 species of *Araucarias* occurring in New Guinea, Australia, New Zealand, Norfolk Island, New Caledonia, Brazil and Chile, with three occurring in eastern Australia. These are the Norfolk Island Pine, *Araucaria heterophylla*, the Hoop Pine, *Araucaria cunninghamii* and the Bunya Bunya Pine, *Araucaria bidwillii*.

The Bunya Bunya Pine can grow to 50m and has the branches in whorls of 10-15. There are two types of branches, the sterile and the cone bearing branches, with the leaves more tightly packed on the cone bearing branches than on the sterile branches. The male cones droop, are terminal on the branches, and up to 20cm long. The fruiting cones occur high up in the crown of the tree. They are up to 30cm long and 23cm wide, contain up to 150 seeds and weigh in excess of 10kg. The seeds are up to 6.5cm long and 2cm



wide, are sweet before being completely ripe and after that resemble chestnuts.

The cones are plentiful every three years, ripening generally in January. It was then that the Aborigines held the Bunya feast in the Bunya Mountains. Each tribe had its own particular set of trees, and of these, each family had a certain number allotted, which were handed down from generation to

*Steve Hopper holding a Bunya Bunya fruit with the Pine in the background to the right.*

Photo courtesy Sunday Times

generation. During these great feasts a truce was called between warring tribes. The seeds were usually roasted before eating, but if there was an excess, they were sometimes stored in waterholes. Here they would germinate and the flavour was considered to have improved. The fortitude of those Aborigines who climbed the trees to obtain the cones must be admired as the abundant, stiff, dark-green leaves have sharp tips. Remember, they had to climb to the crown of the tree to collect the cones.

The timber was of commercial use as it is strong, and with beautiful veins, readily worked and polished. Most of the large commercial trees have been cut, many having had trunks of considerable girth.

So when you next walk past this magnificent tree near the Administration centre, think of its significance.

**Dr Eleanor Bennett,**  
Principal Display Botanist.

## It's a rare thing

**A**RTWORKS by Melbourne artist, Helen Leitch, who has been commissioned to produce 35 paintings of rare and endangered Australian animal and plant species, will be exhibited in the Lecture Room at the Administration Centre, from 1st September to 23rd October 1994, as part of an Australia wide circuit. Keran Keys, Assistant Horticultural Advisor (and active Friend), needs volunteers from Friends and/or families to staff the exhibition during this period. Opening

hours will probably be from 10.00am to 4.00pm. She is also keen to hear from anyone who has experience with art displays who could help with hanging the paintings.

**If you can help please phone Keran on 321 5065 between 8.15am and 4.15pm, Monday to Friday.**

It is planned to arrange a viewing of the exhibition for Friends during this period as part of our regular meeting programme.

**A**LTHOUGH December 11th was extremely hot, 50 Friends met in the old Tea Pavilion for our first afternoon meeting. After some discussion about plans for Friends activities in 1994, Roger Fryer, Curator, Living Collections, took us to the nursery to explain how the Park is involved in the *Propagation of Rare and Endangered Species*. From seed collection and storage to the sowing of seed, grafting and cloning, we were shown the intricate processes which must be followed to enable successful propagation. We were also made aware of how much needs to be done to record all species, especially as up to 30% have not yet been named and some are on the point of extinction. After this fascinating and stimulating session, we adjourned to the Administration Centre to enjoy Christmas cake, thanks to Margaret Smyth.

**T**HE expertise of Dr Phil Playford was much appreciated by more than 30 Friends who attended the first meeting for 1994. Talking on *The geology of the Perth region*, he gave us an insight into the geology of our region which influences the landscape, flora, fauna, and eventually, the economy. It was interesting to learn that the Darling fault is one of the largest in the world, and the presentation of Rottnest Island as a world exemplar of a limestone island made this an interesting and informative evening.

Steve Hopper explained that security of the Administration Centre has been upgraded due to repeated break-ins. The alarm will be switched off in the areas the Friends use for meetings, but opening any office door will set it off.

**M**EMBERSHIP numbers to the end of 1993 were 260. A very good result for an organisation still in its first year! Membership fees are due from 1st January, unless you joined after 30th September, and a renewal form is included with this newsletter. In future there will be a pro rata fee for people in their first year of joining.

### Saturday bird walk



Judy and John Blyth from the WA group of the RAOU conducted a walk, commencing at 7.00am, through the pine forest, arboretum and part of the Botanic Garden, which 36 adults and 3 children enjoyed greatly. Tom Alford also gave a knowledgeable commentary on the names of various trees and shrubs in flower along the way, providing a good combination of the ornithological and horticultural.

Because of the strong Easterly, small birds generally stayed hidden, but later, in the Botanic Garden, many more were seen. Both John and Judy had a very keen eye for the less vociferous birds. Grey Fantail, Varied Sittella, Little Wattlebird, Brown Honeyeater, Silvereye and of course many of the larger birds: Magpie, Raven, Red Wattlebird, Kookaburra and Rainbow Lorikeet, were seen. Breakfast afterwards, of giant croissants, made a very pleasant finish to the walk.

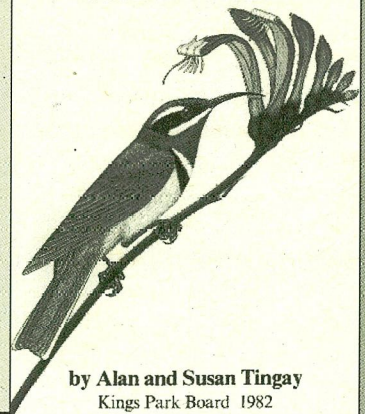
**T**HE AGM will be held at the 14th April meeting and fees must be paid before you can vote or nominate for a Committee position. We are particularly in need of a Secretary and Treasurer, as both these positions will become vacant, so if you, or someone you know is willing, please nominate.

**A**NUMBER of enthusiastic members have been helping Audrey Dixon, our membership secretary, with a range of clerical and other tasks which are essential to keep the Friends organisation running. Most recently this has involved filling lots of packets with seed for sale at Garden Week! If you would like to help, keep in contact Audrey, as the work is erratic, and she needs a list of people she can call on as things come up. Audrey is doing an excellent job, and our thanks to her for this.

**A**MOTLEY crew of 33 Friends, clad in sturdy clothes, heavy gloves and hats, spent two and a half hours on Sunday 6th March collecting rubbish from the verge of Mounts Bay Road from the South-western boundary of the Park to Kennedy Fountain as part of the *Clean Up Australia Campaign*. Girl Guides from the 1st Huntingdale Unit also helped as part of their Community Service Awards. The rubbish was unexciting, and although we all got very hot and sweaty, it was very satisfying to have participated.

THE Kings Park office has a book available to purchase for \$6.00, which includes both a writeup and excellent pictures of birds: *Tingay, Alan & Susan: Common Animals in Kings Park and Perth Gardens*. Kings Park Board, 1982.

#### COMMON ANIMALS IN KINGS PARK and Perth Gardens



by Alan and Susan Tingay  
Kings Park Board 1982

*Do you take photographs? Do you come to Friends' activities? We need a person to take photos which can be used in the newsletter. If you can help please contact Jill Midolo on 381 5565.*

# Coming events

## FRIENDS MEETINGS

April 14	Peter Birch, A/ Director, WA Observatory. <b>The Perth Sky: field night and lecture.</b>	6.30pm, DNA tower
April 30	Afternoon <b>Statues/ Memorial Walks.</b>	2.30pm Old Tea Pavilion
May 12	Mack Seale, Senior Kings Park Guide. <b>Land of Banksias.</b>	
May TBA	Afternoon <b>Hale Oval/ Perfumed Garden.</b>	
June 9	Susan Rhind, Research Scientist. <b>Phascogales (Arboreal marsupials)</b>	

Guided Walks	Day	Starting point	Available
Botanic Walk (about 2 hours)	Monday 10am	Karri Log Fraser Avenue	April 4 - October 31
Botanic Garden & Bushwalk (about 2 hours)	Tuesday 10am	Karri Log Fraser Avenue	April 5 - October 25
Botanic Garden (about 1.5 hours)	Thursday 10am	Karri Log Fraser Avenue	April 7 - October 28
Bushwalk (about 2.5 hours)	Friday 10am	Cnr. Saw Avenue & May Drive	April 1 - April 28

April 25 **ANZAC DAY.** ANZAC Day Dawn Service.  
BBQ after. Subwardens meet at **5.30am.**  
Service starts approx **6.00am.** Be early.



& BOTANIC GARDEN

(Continued from page one)

excellent publicity in the *West Australian* and other local newspapers for the work of the Park staff in relation to smoke germination of seeds and the progress made with the growing of a number of endangered species such as the Native Foxglove, *Pityrodia scabra*, and a Wheatbelt Snakebush, *Hemiandra rutilans*.

Apart from this positive publicity, there have also been some very mixed reactions to reports of the proposed corporate sponsorship of the Park. The aim of this sponsorship is to support research, education and conservation as well as upgrade public services such as recreation facilities, improve bushland management and signs. The R&I and Alcoa already sponsor signs and a plant research laboratory. The acknowledgement of this sponsorship will be discreet, such as you can see on the present plant labels. The Board has no intention of allowing large advertising billboards.

The Park needs to upgrade many facilities which were put in during the past 30 years, and have now reached the end of their useful life. Without funds from the private sector, this essential work will be limited, as will the pleasure which the Park gives to so many Western Australians.

## Kings Park Guides report

**A**LTHOUGH General meetings have been in abeyance over the Christmas period, representative Guides were involved with Board members in plans for fitting out the new Information Bureau — the building that pairs with the Souvenir shop in the new complex.

Plans now approved by the Board involve the provision of a pair of new double doors opposite the existing pair so that there can be a flow of visitors past the service counter both up from the main approach to the complex and down from the shop and restaurant entrances. The service area will back onto the wall next to the Snack kiosk, with film on the glass panels to give some privacy on that side, together with a grilled sliding window for ventilation. Round the corner, the side facing the river will maintain its clear view across the city.

Beyond the shop end of the service

area, a two by three metre space is to be equipped as a video display area. Other video display points are in the corners behind the double doors. Eventually, these displays may be available for viewing from outside when the building is closed.

At the first General meeting of the year, the Guides heard from Eleanor Bennett the arrangements for a new intake of Guides. A total of 30 trainee Guides attended on February 14, (including a number of Friends) for the first of six instructional sessions and walks intended to equip the participants for duty in the new Information Bureau. It is hoped that some of these people will go on with further instruction to help with the Education Walks that have become such an important part of the Guides' activities.

**Roger Hilton, Further Education Officer, Kings Park Guides**

**Editor:** Jill Midolo  
**Design:** Mundy Design  
**Printing:** Dix Print

PRODUCED ON BEHALF OF THE  
 FRIENDS OF KINGS PARK.

*Friends of Kings Park  
 may be contacted:*

Kings Park & Botanic Garden,  
 West Perth WA 6005  
 Telephone: (09) 321 2513  
 Facsimile: (09) 322 5064  
 (Office hours only 8.30 am - 4.30 pm)

ISSN 1039-8856  
 Print Post Publication No. PP64393810020

PRINTED ON RECYCLED PAPER